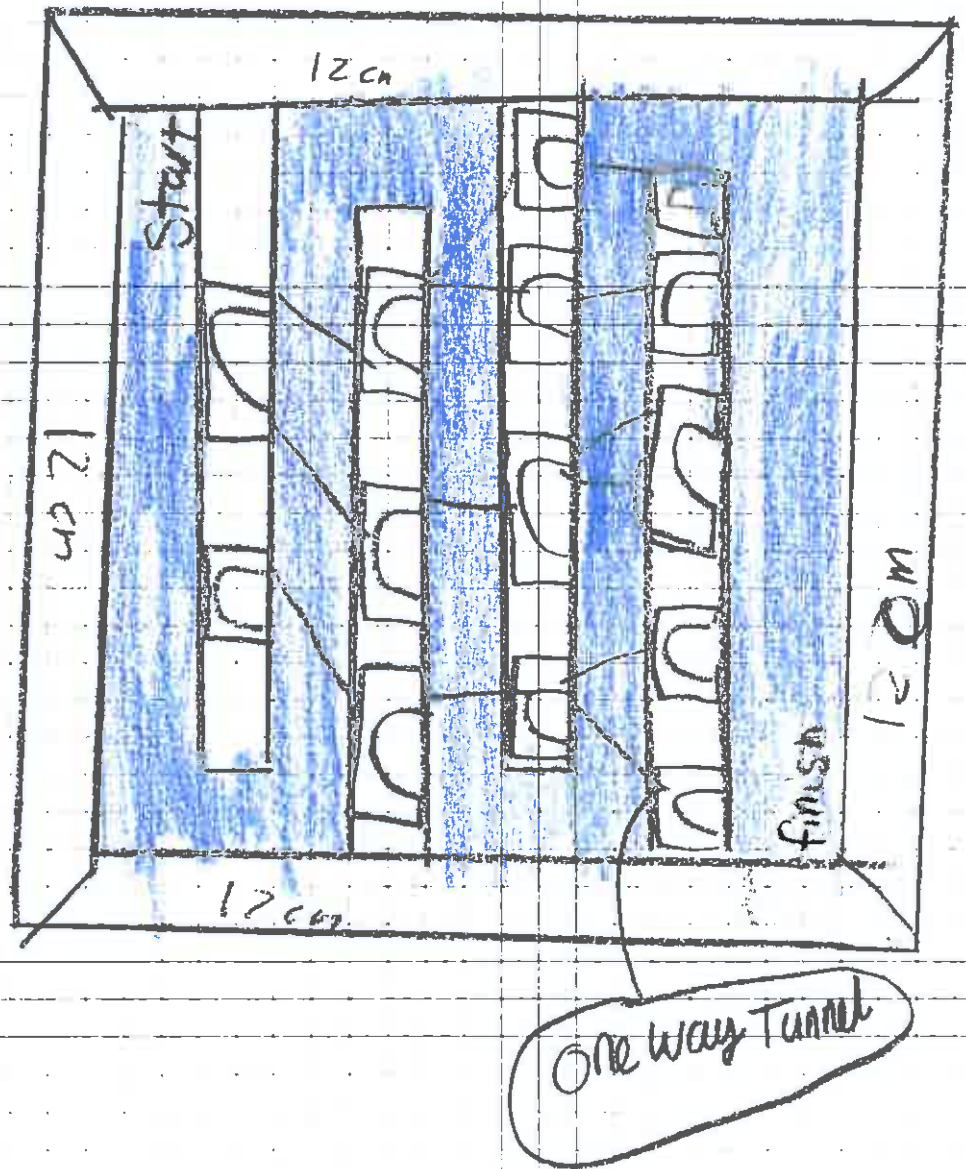
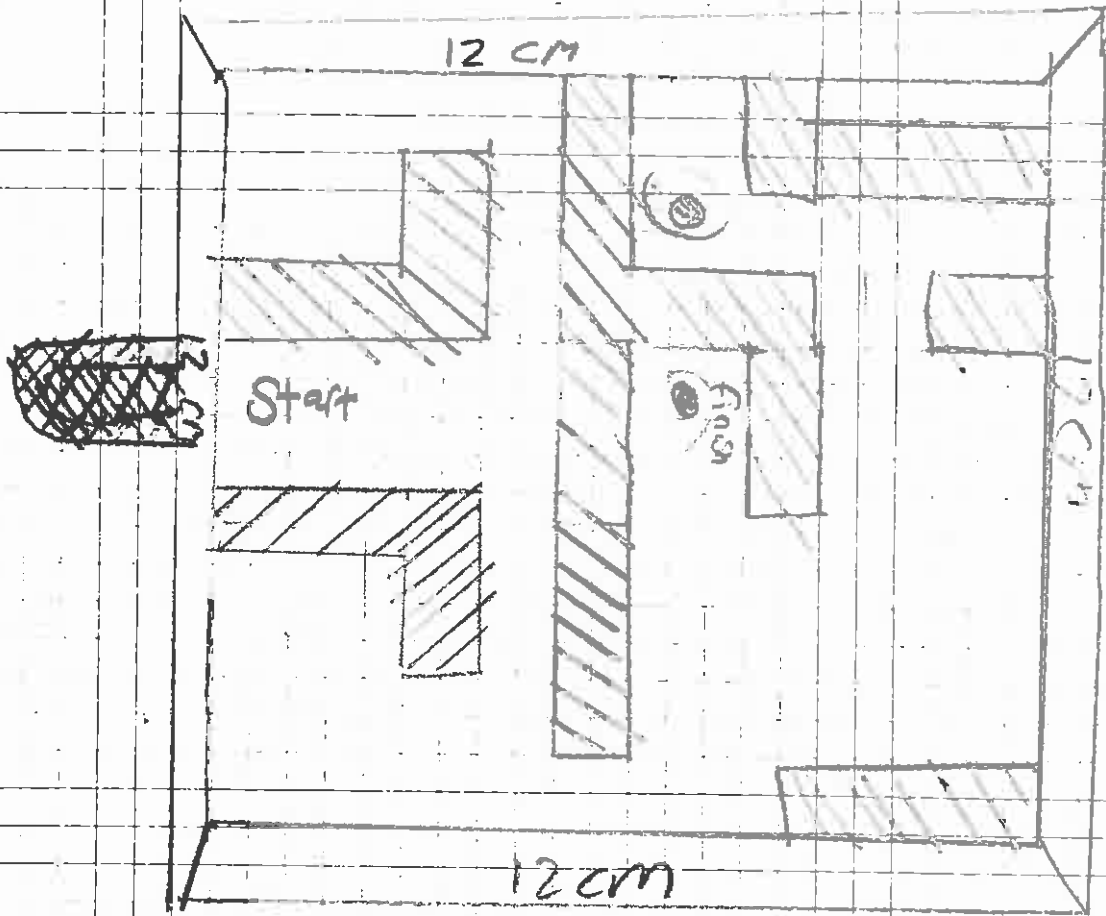


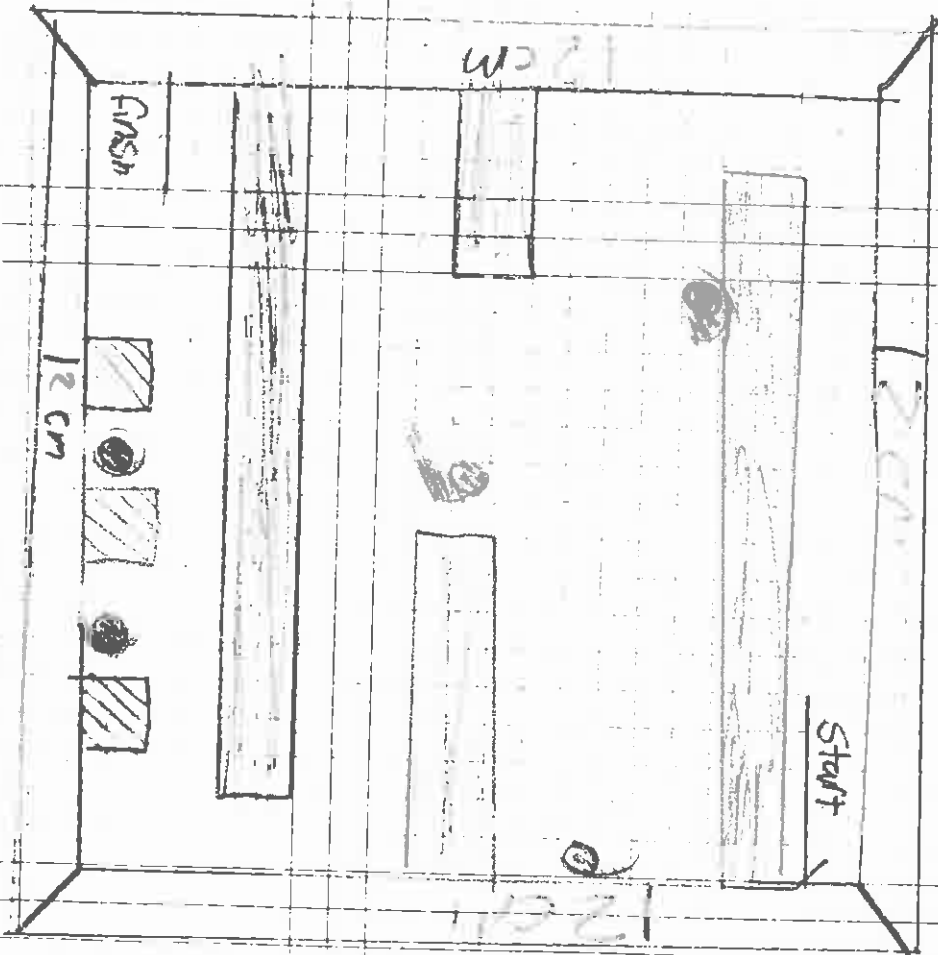
James Miller



James Miller



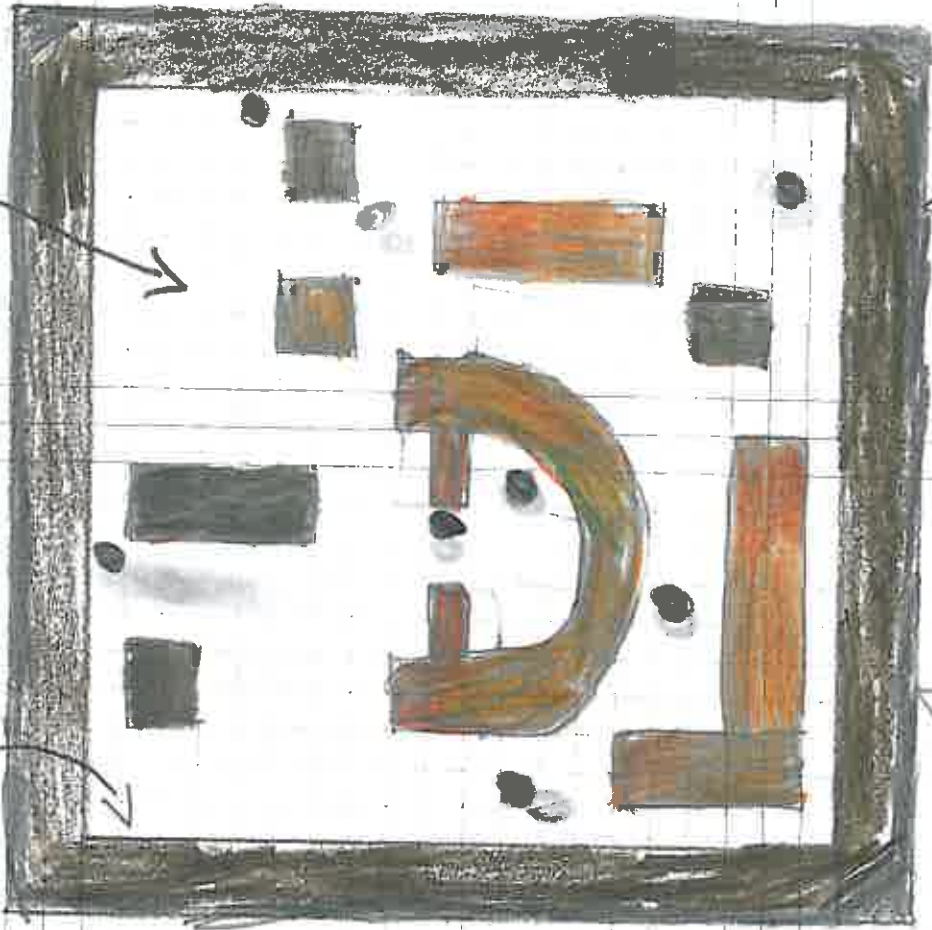
James Miller



William Tillet




wood colour

10cm



12cm

Burnt

Key:	
	Burnt edges
	Holes
	blocks

William Tyler

start/finish

way to go

Key



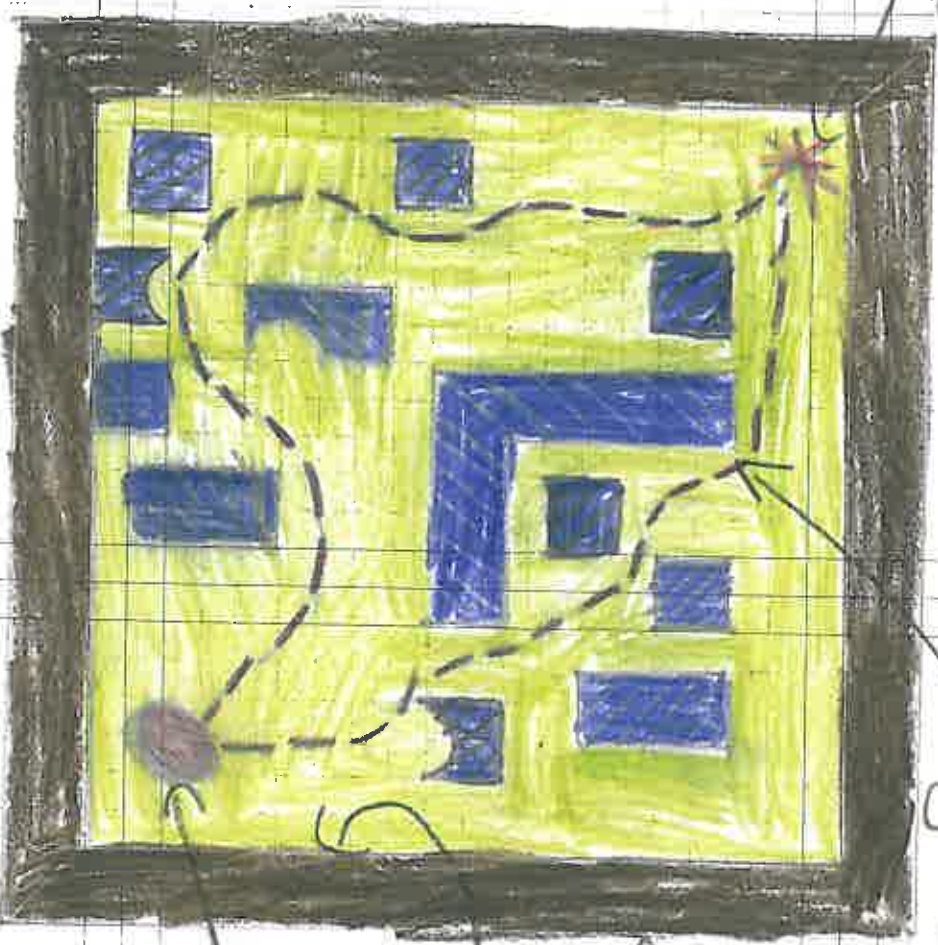
start

The way to go

10cm

12cm

hole to other side






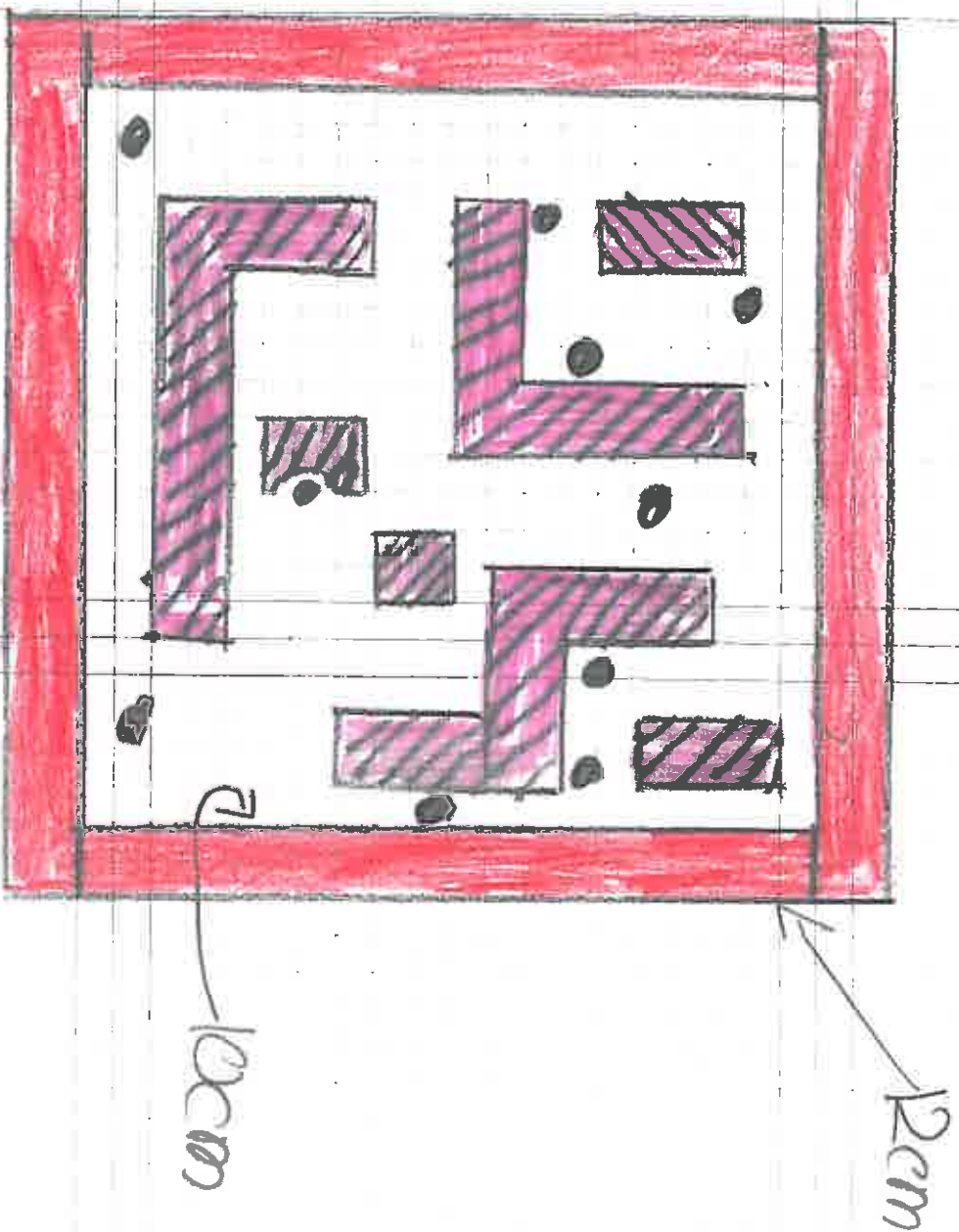
Page 7 no

back side



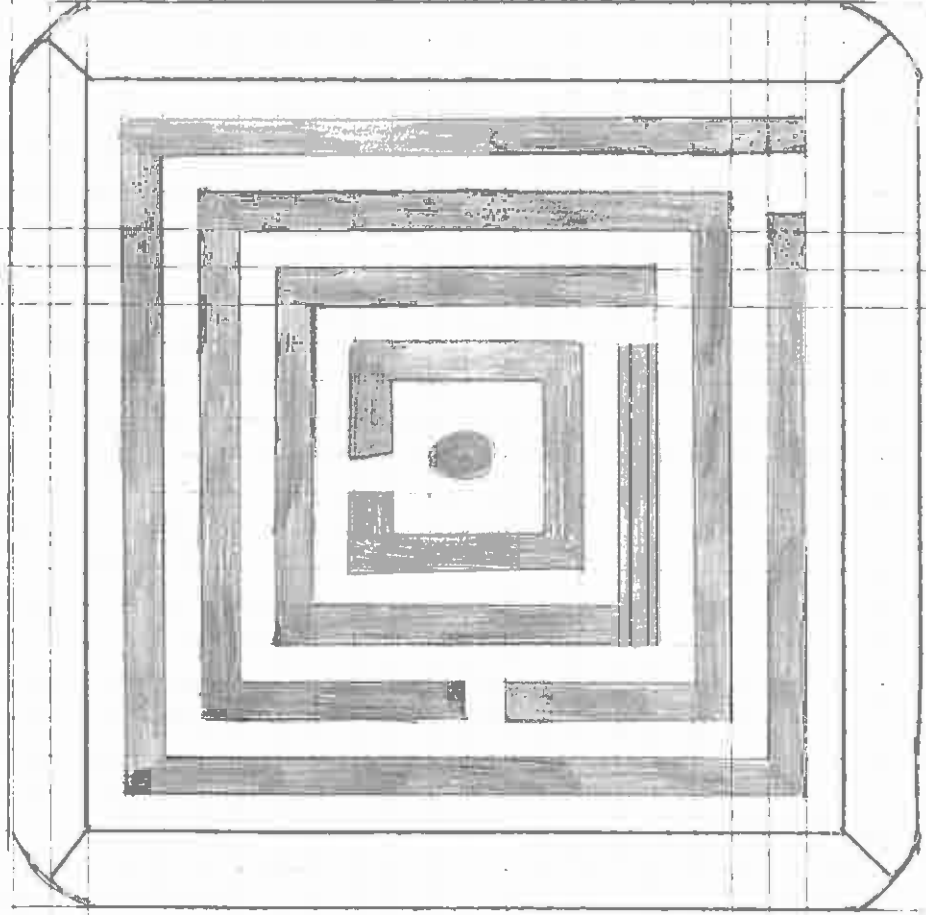
William Tiller

Key:	
	little hole in the block
	the place the ball has to go
	block





Alyssa Wieder 7.3 (7D6Y)



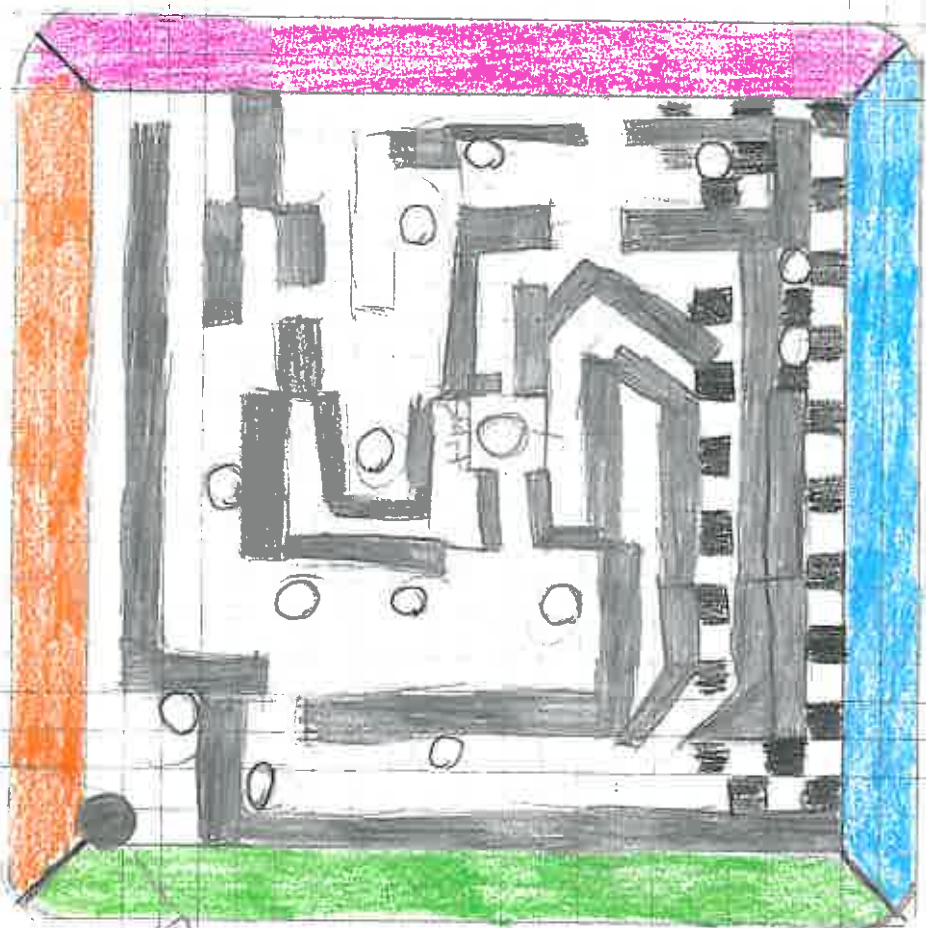
● = EndCwin

■ = Wall



3 : ) : P : \ = . = : ( : D < 3

↑  
side



END

== Wall

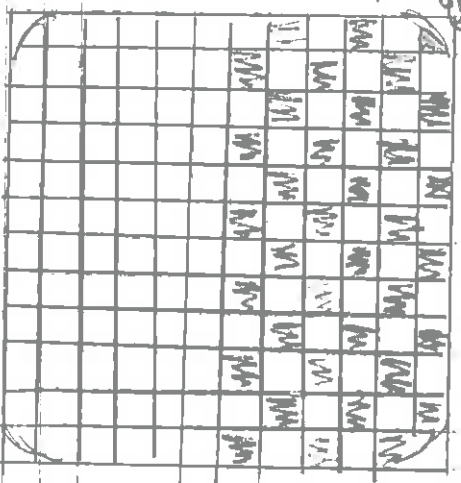
Start

O = Ball

O = Hole (don't go in)

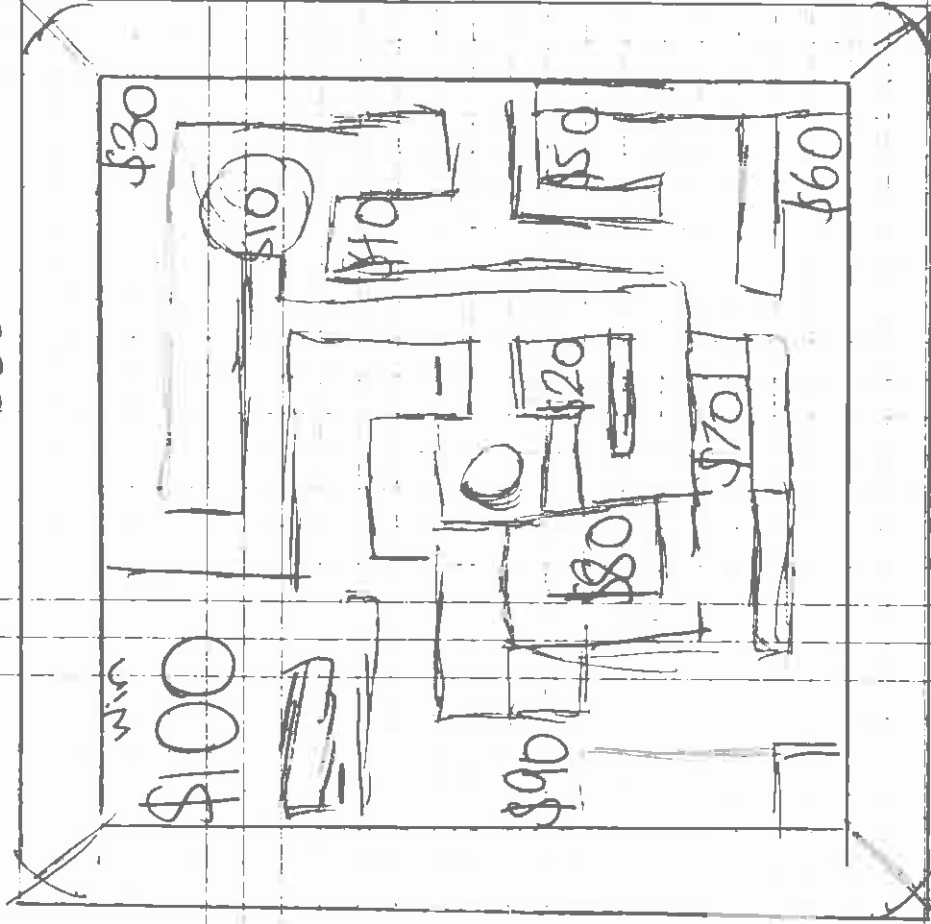
● = Hole (End)

checkers

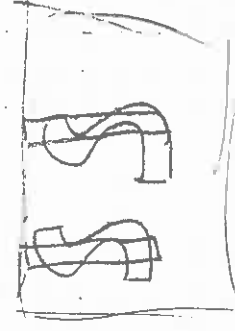


cha ching! cha ching!

side



Theme!



= money

O = Fail

\$10, 20, 30 = Money

\$100 = Cha ching's

- = Subtract money

(go back

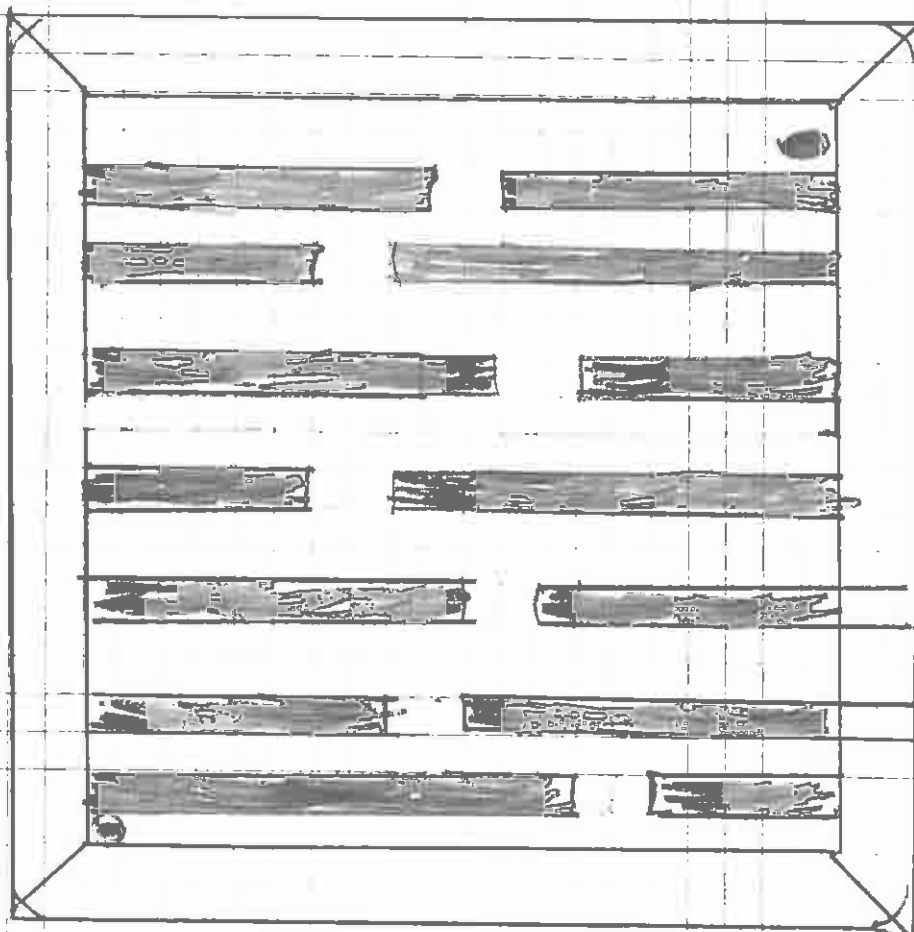
and get

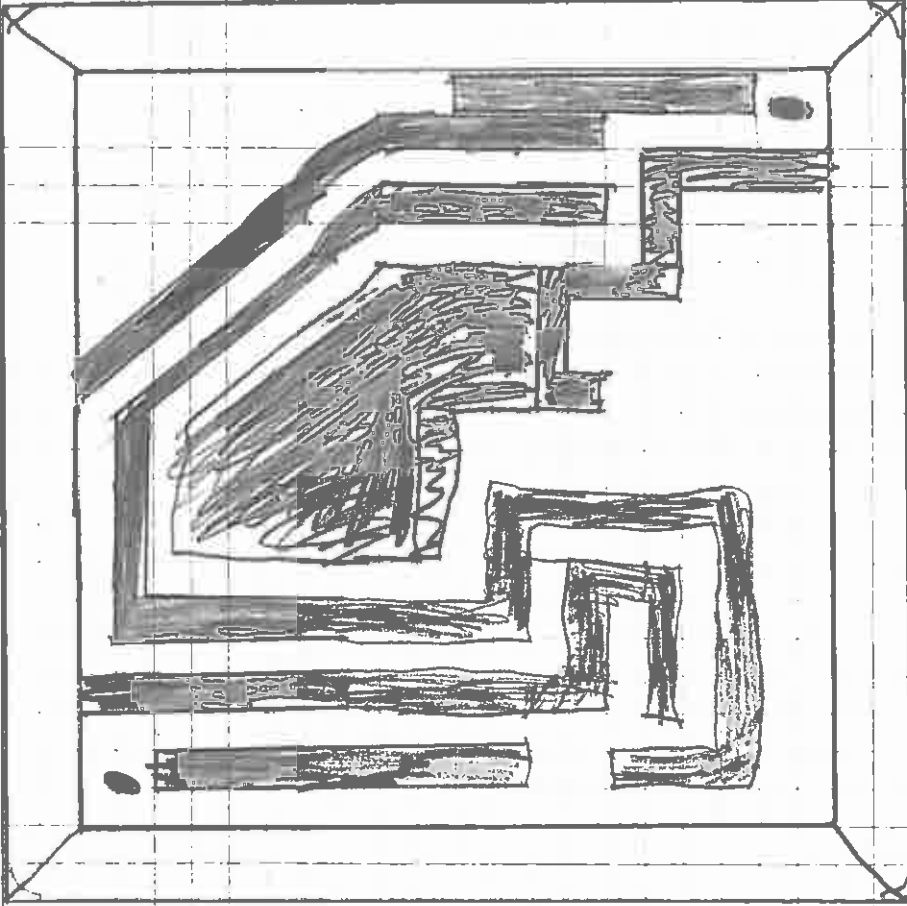
the

last

number)

Matthew

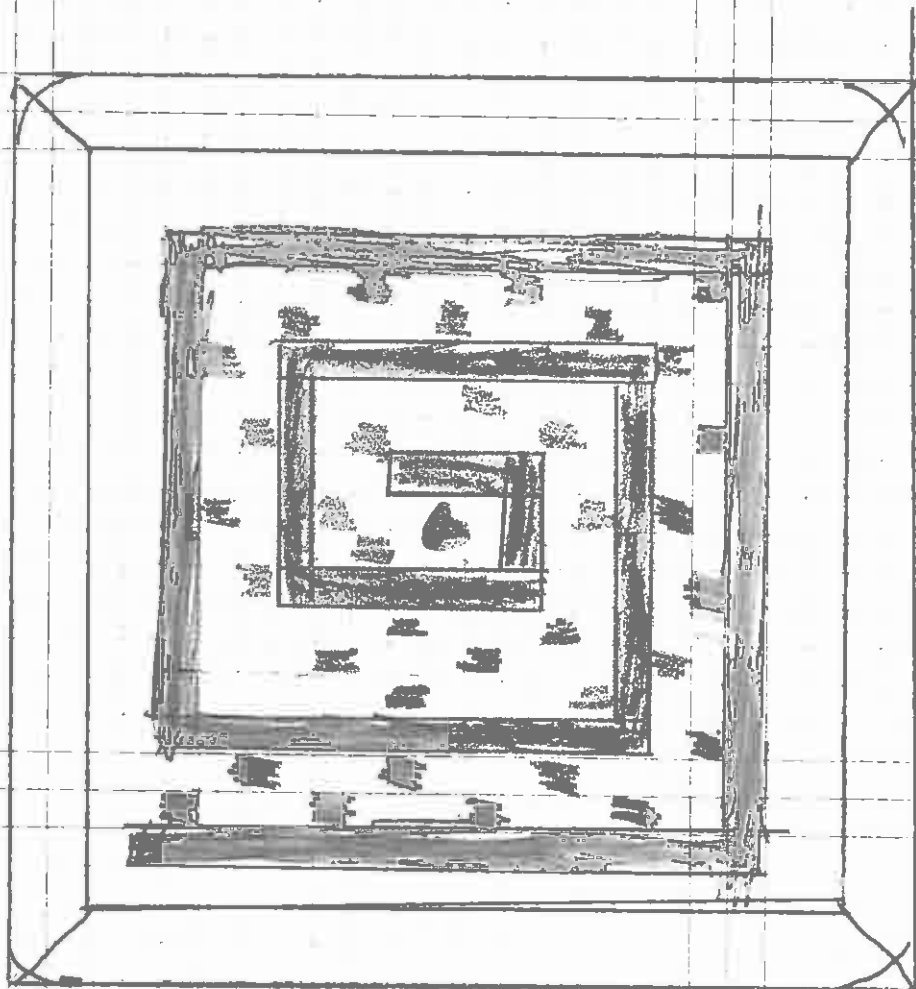




Matthias

Matthew Macpherson

7 mps

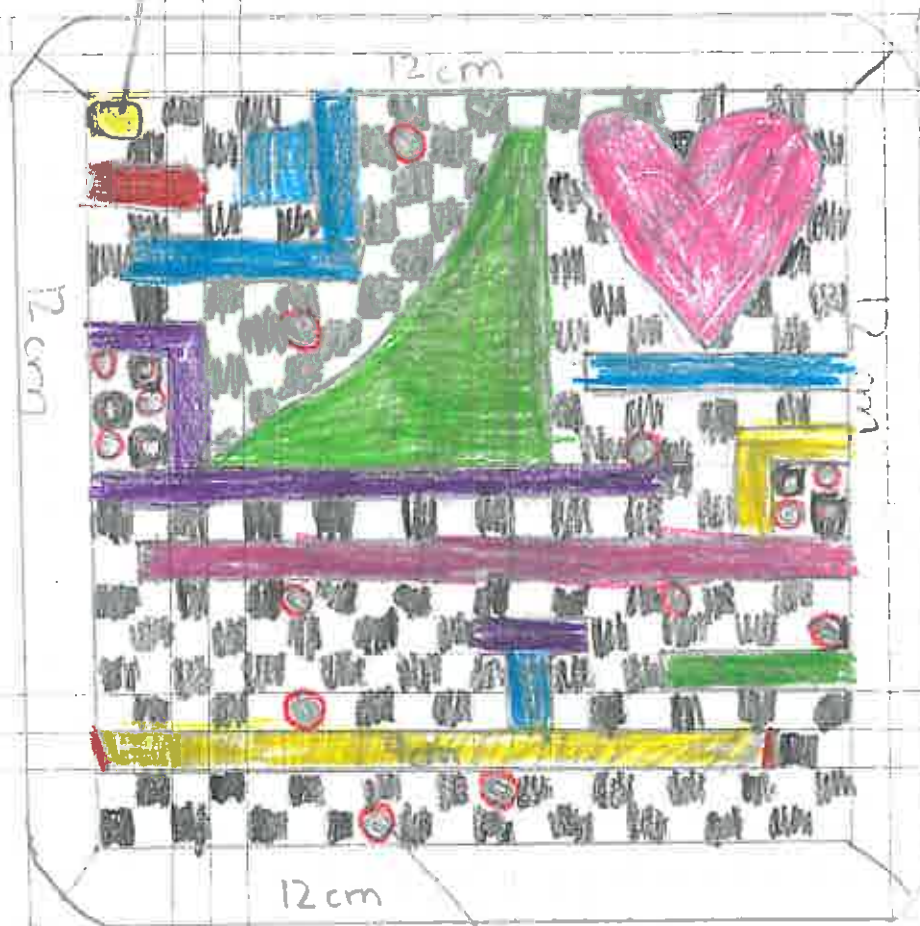




1244 Nash

Sketch 1

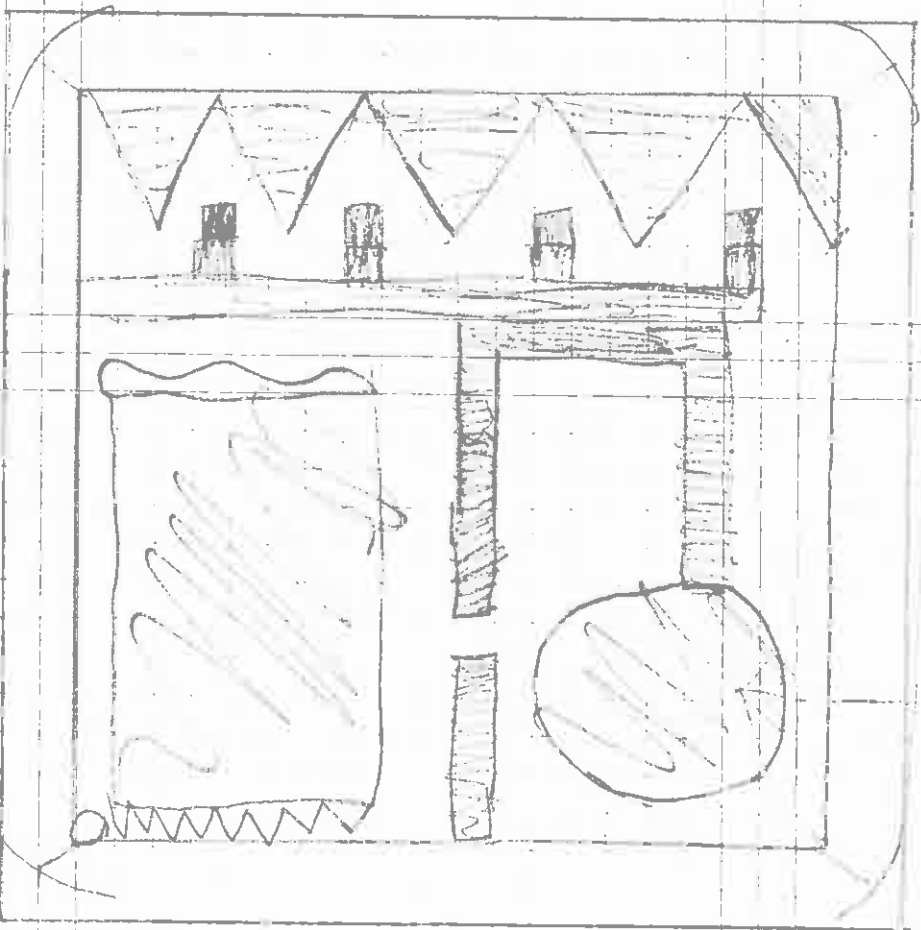
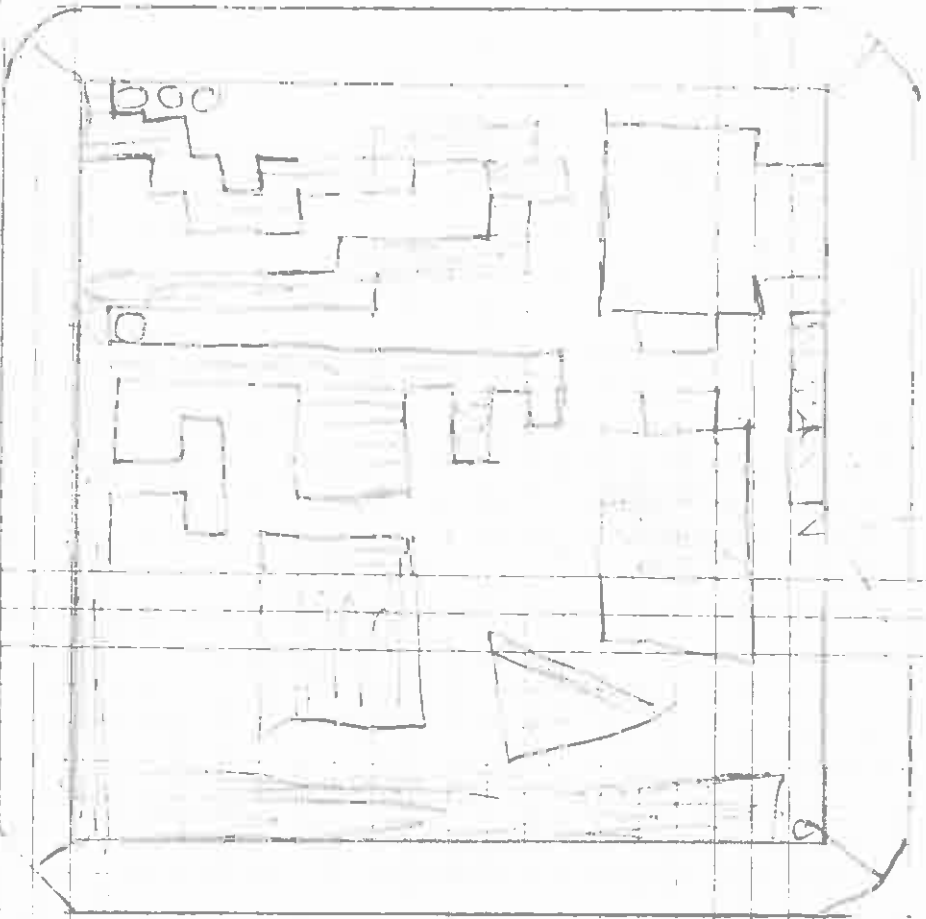
the Gold



avoid  
these  
holes

1224 Nash

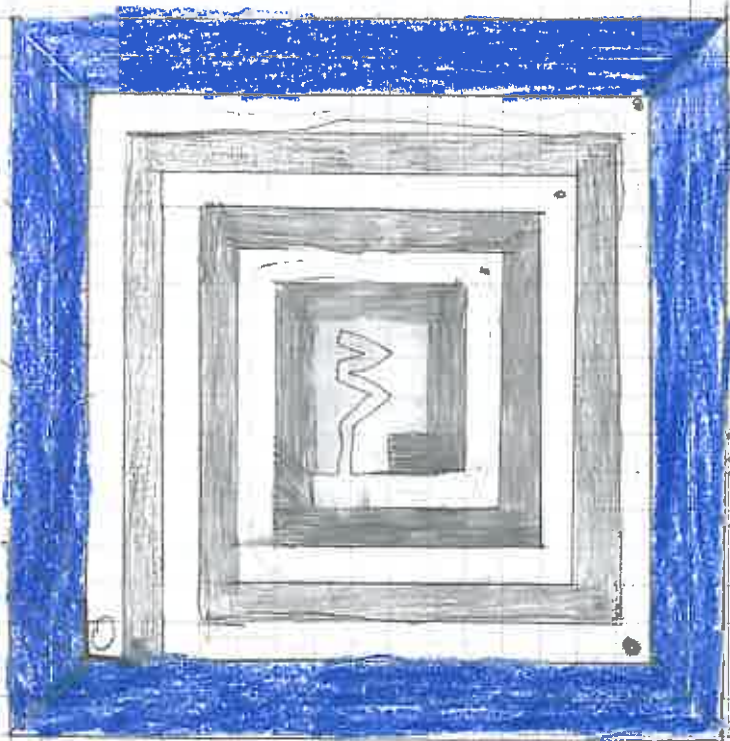
Sketch 2



Sketch 3

Michelle Wernisch 7/10/05

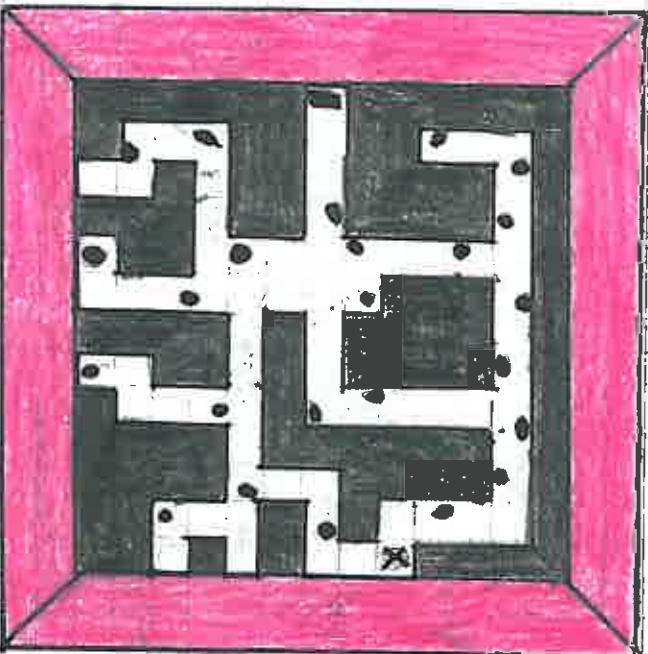
Key:  
O - ball  
- wall  
• - holes



Key

■ - ball    x - Finish

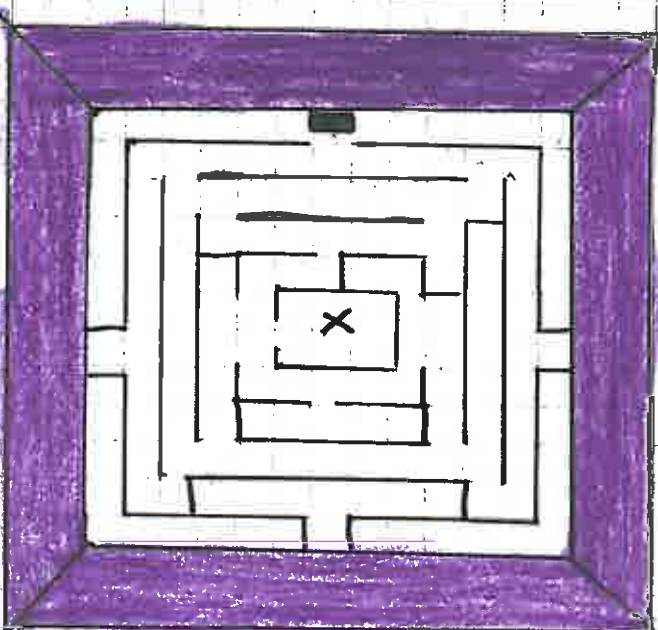
● - hole



Key

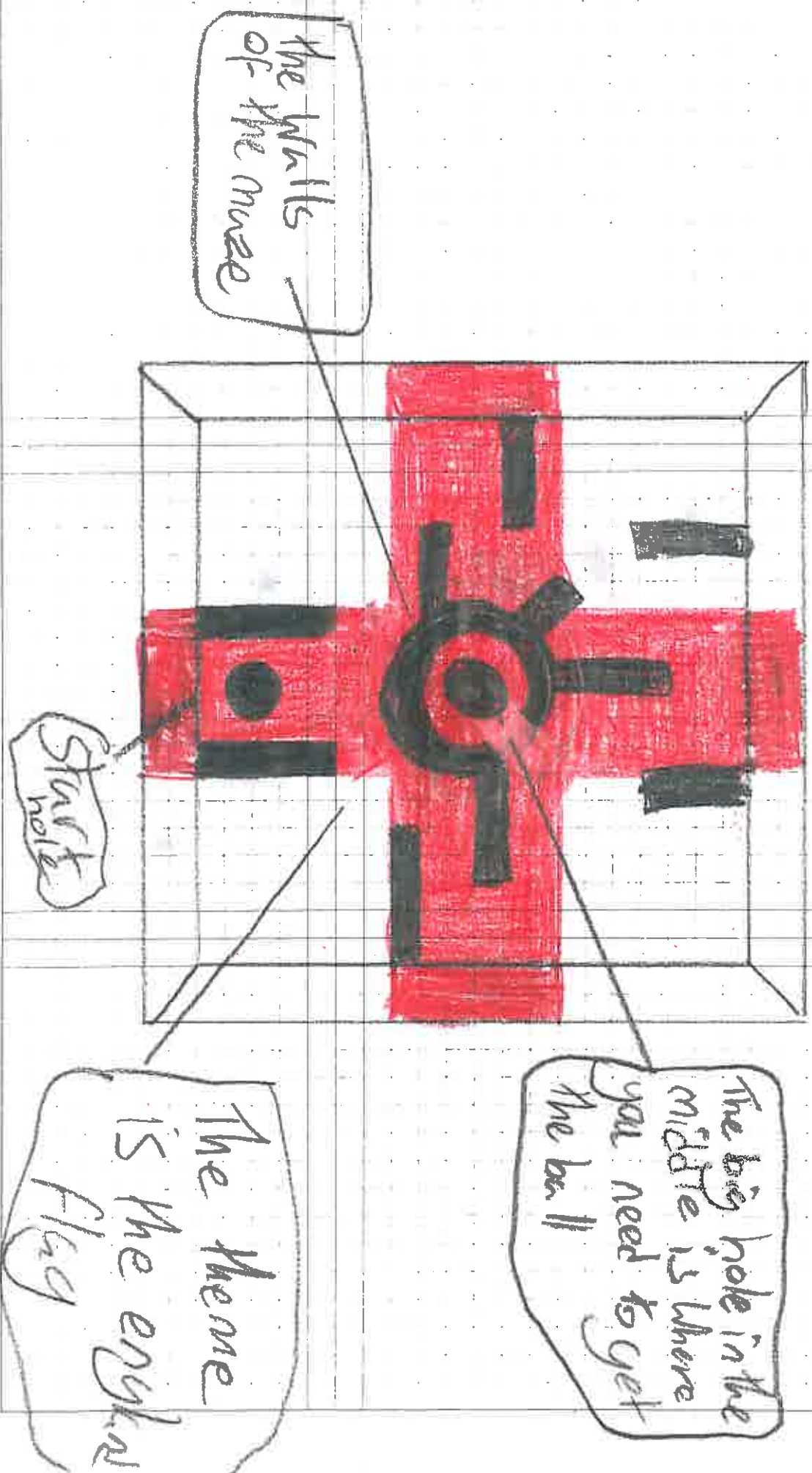
■ - ball

x - end





# Jacob Robbuck

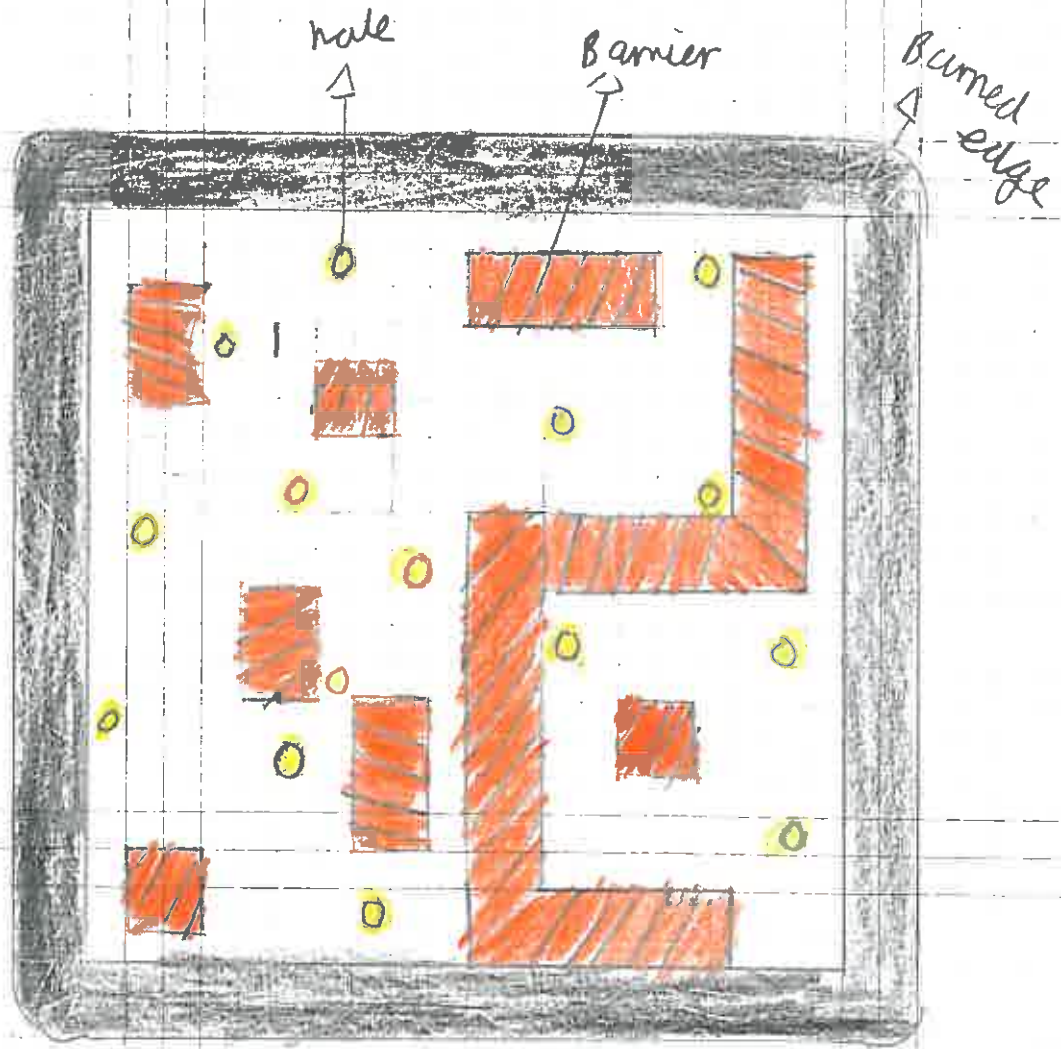




- Aim: To get all the balls in the holes without

Materials:

- soft wood
- plastic



Theme:  
- sink

KEY:	
	blunt edge
	hole
	walls

# pierre 7MPS D.T

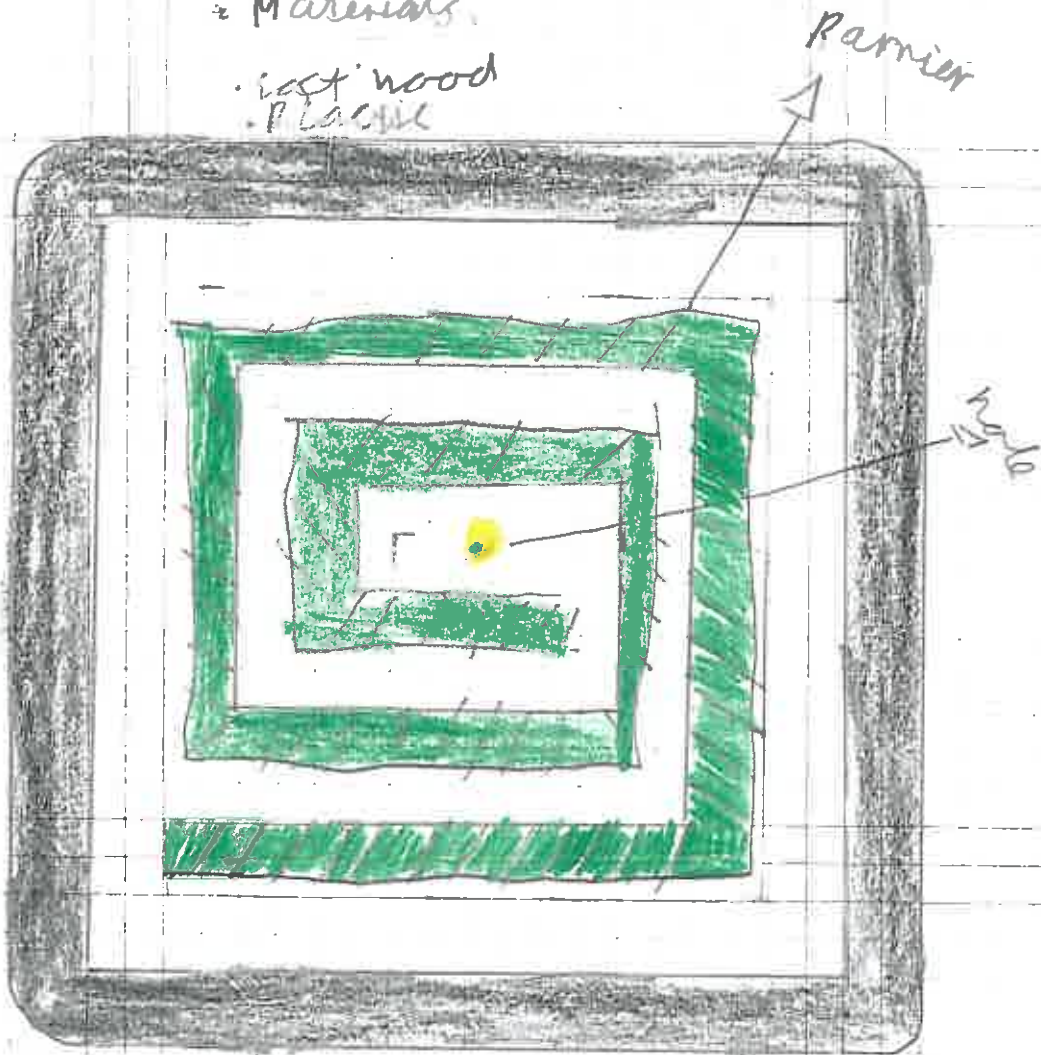
• Aim: To get the ball in hole

• Theme

• sky

• Materials:

• east wood  
• plastic



KEY:

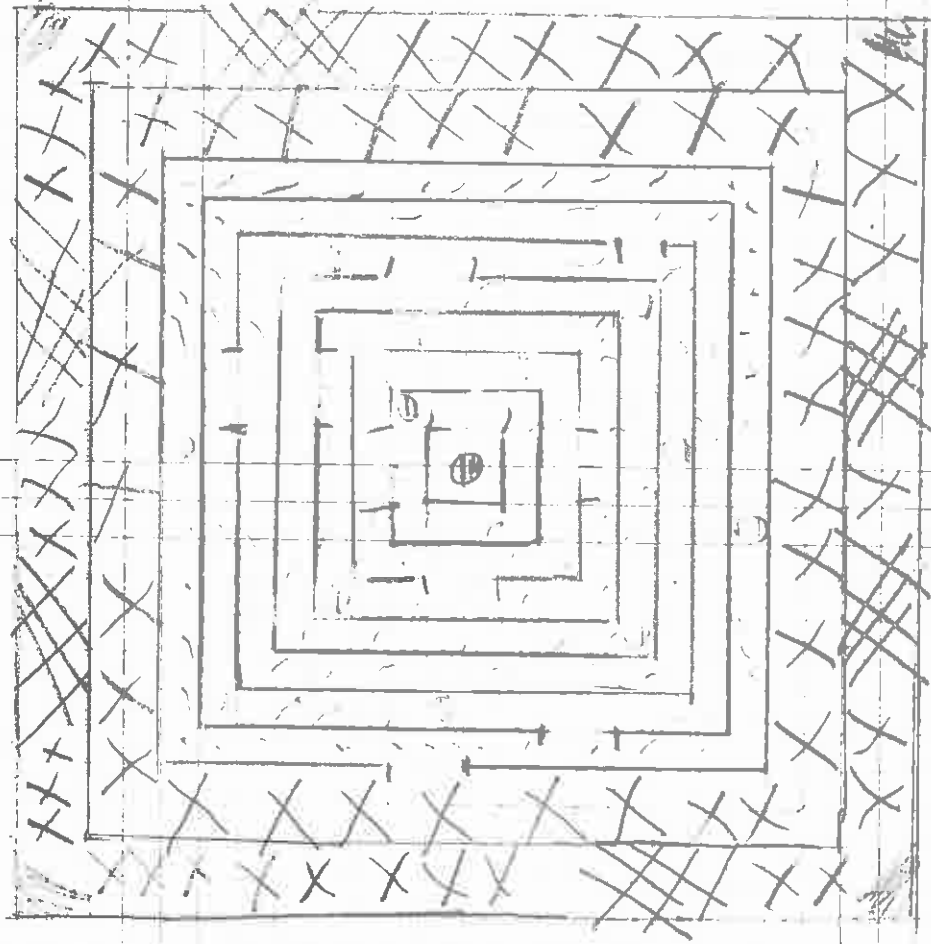
•

Hole

Made of:

- soft wood
- PVC plastic
- card board with back ground or paper,

Aim: To get the ball in the holes.



Key:



Burned edges



Slight burns



Barriers



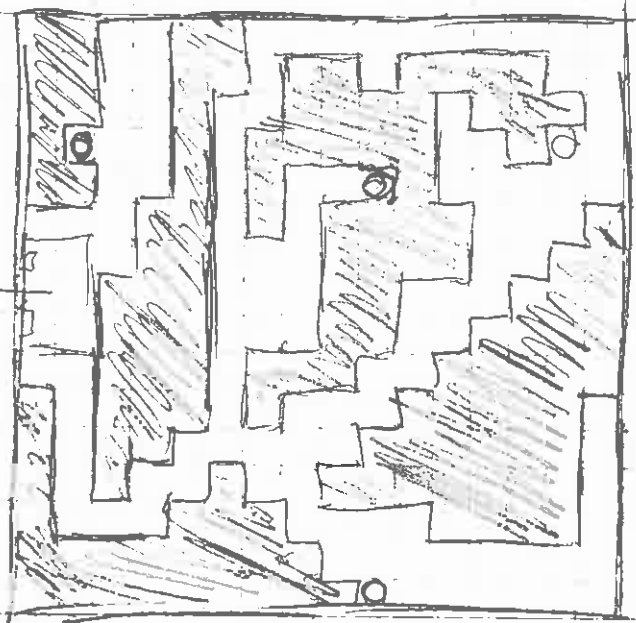
Back Ground



Hole

I hem:  
sive

Saxon chess



Flap it  
any ke.  
to insert  
ball.

Chole



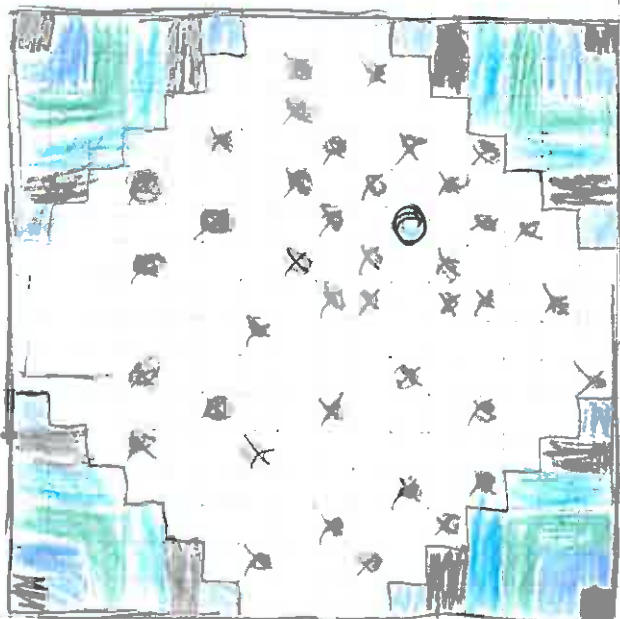


Jason Chen  
10 cm

10 cm

10 cm

10 cm



○ = defective  
X = do not touch  
etc

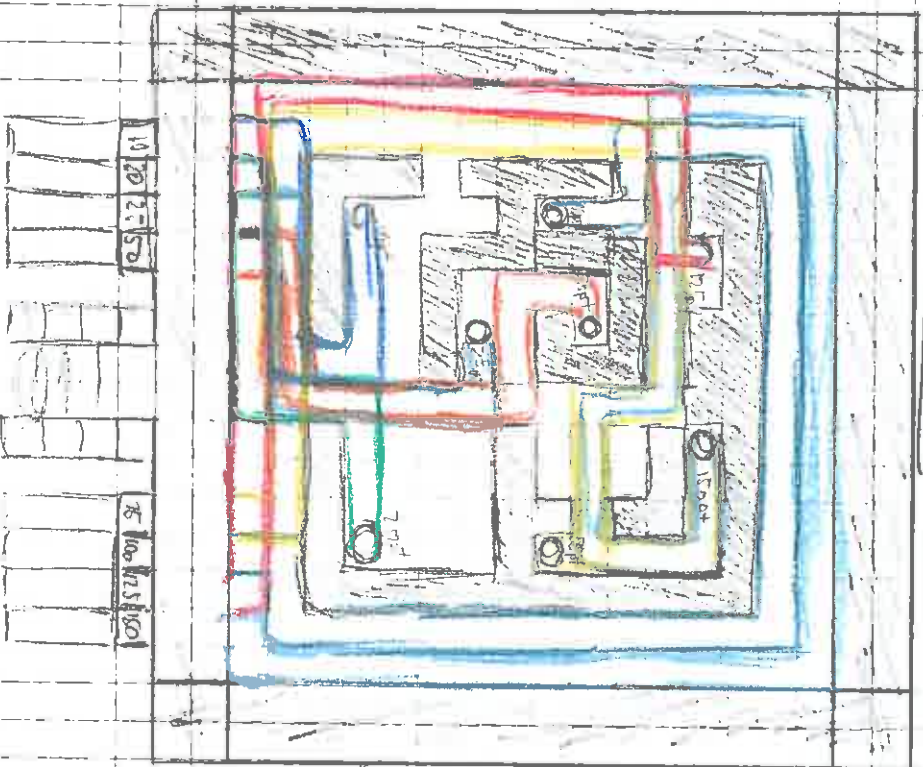
19.  
11

Tutor Chem

Cyano Ball 11 x 11

o = hole

Different holes are connected to tubes that connect to the ball holders. By getting things from the bags in the ball holders



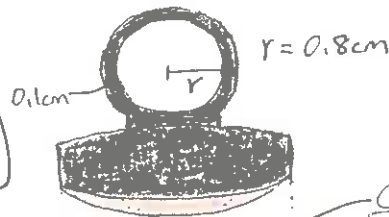


water texture (made by glass)  
smooth surface given by  
glass (casting resin with golden  
shimmer)  
orange + pink (orange > pink  
+ a little  
brown)

### Background

Hawaiian beach during  
the sunset: an image

Casting resin is  
still visible from the  
side since it  
emphasizes 'water'  
which must be the  
most outstanding part  
of the design



Casting resin  
orange and  
pink represent  
the afternoon  
Hawaiian sea  
and Jannab's  
strawberry  
pinch



### Brass

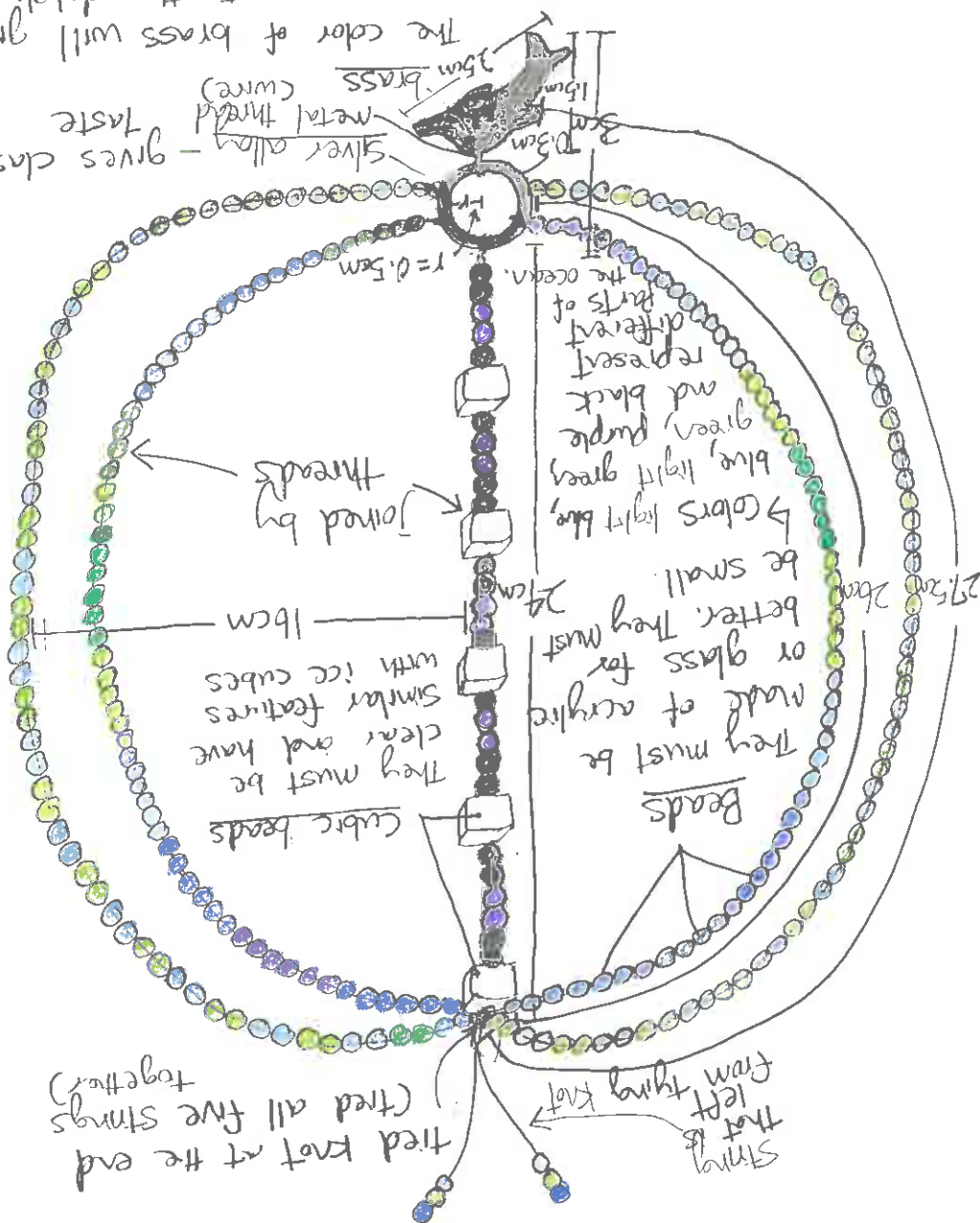
the color gold  
gives elegant and  
classical taste  
to make the design  
suitable to many women



### Background

a picture  
drawn by  
me  
→ Hawaiian  
beach landscape

The color of brass will give prominence to the dolphin as emphasis of the design since it is gold.  
 Silver alloy - gives classical taste  
 metal thread (wire)



Shimmering green + blue indicate the sea

so it would look more suitable and relevant for women.

gives elegant and classical taste

Brass



Egyptian culture

→ beach +

Pharaoh

colors indicate

glass emphasizes water

Casting resin

(orange > green > brown)

orange

light brown (brown)

dark green

light green light green, ...

blue

colors

brass



enamel on brass

original brass

water texture (made

casting resin with

smooth surface

shimmer

$r = 0.8 \text{ cm}$



with shimmer

3cm

with shimmer

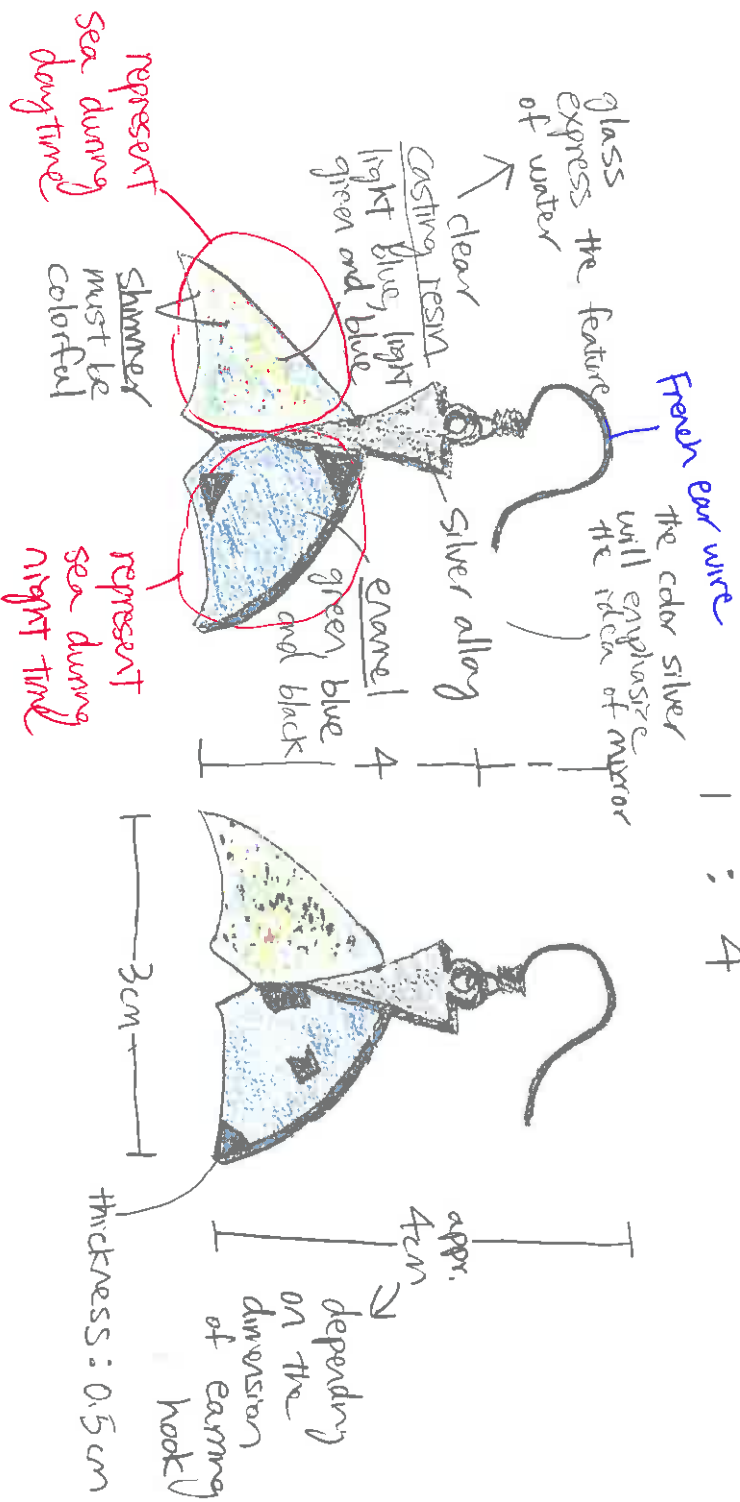
higher

same level

2cm

Enamel

hook : design (vertical ratio)  
 1 : 4

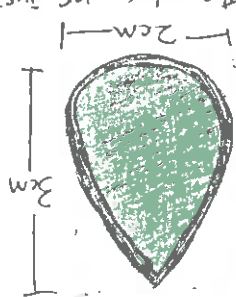


The design is inspired by dolphin tail





\* the color was just



light blue > blue > pink > light green

Colors

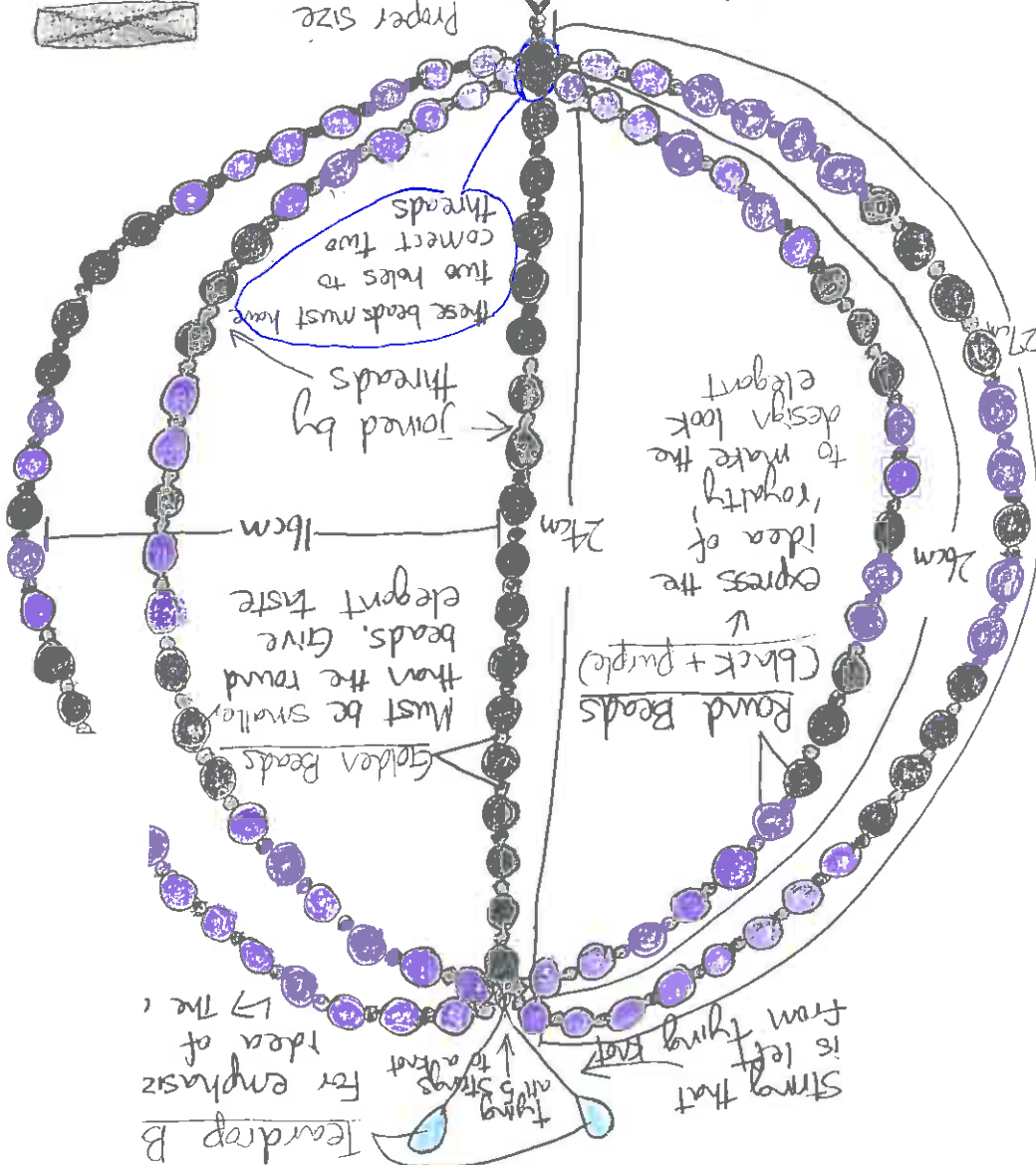
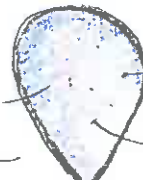
casting resin

four drop there

Perfume drop there

proper size

shimmer



String that is left from tying knot

teardrop B

For emphasis idea of

all strings to knot



gives classical and elegant touch

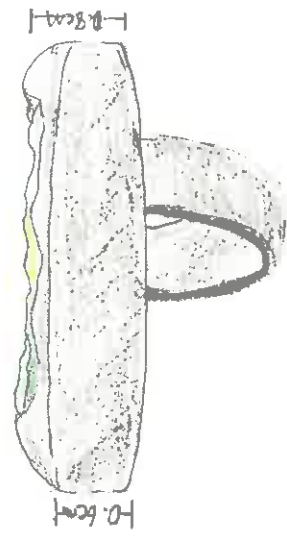
Brass

2cm

Wavy frame indicate sea

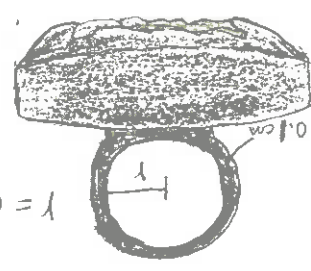
Casting resin light green and blue represent the Hawaiian sea on a sunny day

3cm



average size among women (fourth finger)

$r = 0.8\text{cm}$



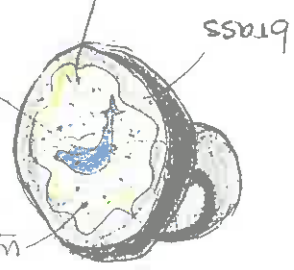
on Hawaiian image background

white dolphins

Make a dolphin statue out from acrylic

Dolphin statue

water texture roughened surface clear blue & green casting resin with shimmer



French ear wire

must be flat  
so the silver  
ring will pass  
through easily

round beads  
gold + purple  
represent royalty

silver ring  
brass

one  
single  
wire

black also  
represent royalty

casting resin

Colors

light blue > blue >  
pink > light green

golden shimmer

-will be added while  
pouring casting resin

